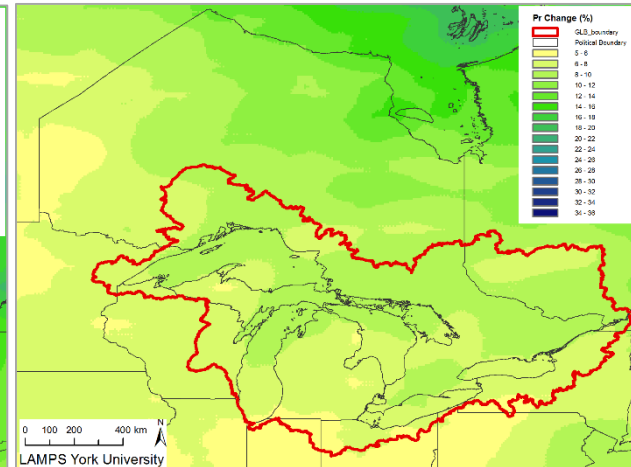
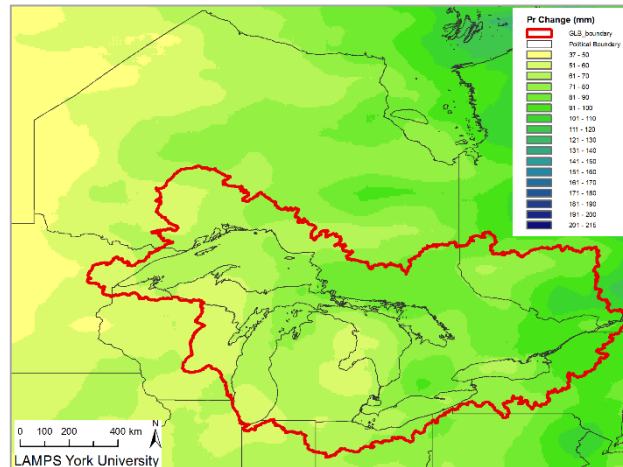
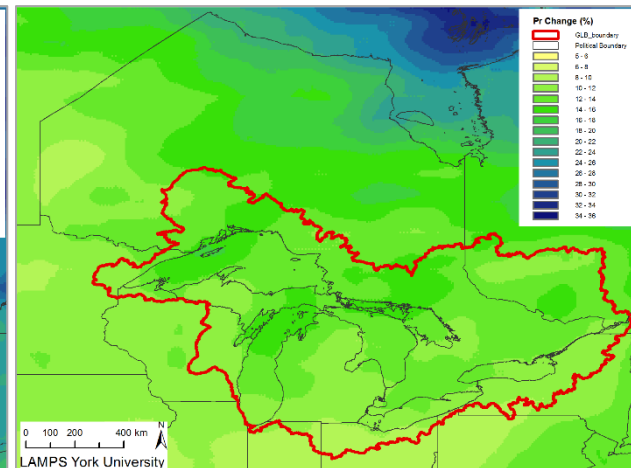
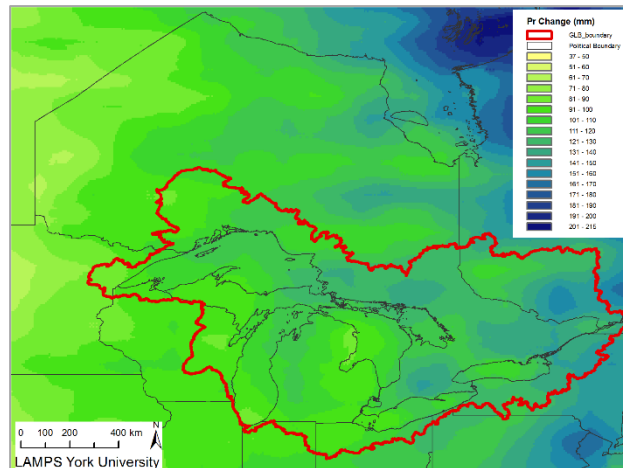


Projected changes in annual total precipitation in the 2050s and 2080s from the 1981-2010 averages

2050s
(2041-2070)



2080s
(2071-2100)



Ensemble mean projections (~10km) developed by LAMPS, York University based on all GCMs (with projections for the historical period) under the IPCC AR5 RCP8.5 and ERA-Interim data. The red line highlights the Great Lakes Basin. [Click on figures to download their full maps.](#) (left: in mm; right: in %)

Ontario Climate Data Portal ([OCDP](#))

**Note these plots will be updated when new results become available, so check back often for the most up-to-date information.*